



## MINI+ Printable parts



Prusa Research

VIEW IN BROWSER

updated 2. 1. 2022 | published 2. 1. 2022

## Summary

Original Prusa MINI+ Printable parts: All printer parts including the spool holder.

---

[3D Printers](#) > [3D Printers - Upgrades](#)

---

All printable parts for your Original Prusa MINI+  
Sorted by [kit assembly manual](#) chapters. You can use the file list and folder structure here to prepare parts in the same order as you will need them according to the guide.

### Compatibility:

MINI+ Printable parts are superseding the MINI printable parts and are reverse-compatible.

Spool holder parts have to be printed multiple times. Look for a number in bracket also in file description.

**MINI-base-spoolholder.stl** (4x)

**MINI-rail-spoolholder.stl** (2x)

## Print instructions

PrusaSlicer's default PETG 0.2mm presets.

# Model files



Y-Axis

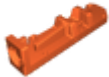
4 files



**mini-y-idler.stl**



**mini-y-belt-holder.stl**



**mini-y-plate-front.stl**

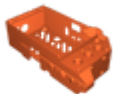


**mini-y-plate-rear.stl**



Z-Axis

4 files



**mini-z-bottom.stl**



**mini-z-top.stl**



**mini-z-bottom-cover.stl**

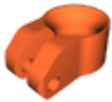


**mini-z-bottom-cable-cover.stl**



**Printhead**

3 files



**mini-fan-spacer-clip.stl**



**mini-minda-holder.stl**



**mini-fan-spacer.stl**



**Heatbed**

2 files



**mini-heatbed-cable-cover-top.stl**



**mini-heatbed-cable-cover-bottom.stl**



**X-Axis**

3 files



**mini-x-carriage.stl**

---



**mini-x-end.stl**

---

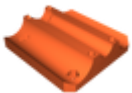


**mini-z-carriage-front.stl**



**Extruder**

5 files



**mini-z-carriage-rear.stl**

---



**mini-inspection-door.stl**

---



**mini-extruder-front.stl**

---



**mini-extruder-idler.stl**

---



**mini-extruder-rear.stl**



## LCD

2 files



**mini-display-box.stl**



**mini-knob.stl**



## Mini Spool Holder

2 files



**mini-base-spoolholder.stl**

☐ (4x)



**mini-rail-spoolholder.stl**

☐ (2x)



## Filament Sensor

3 files



**mini-fsensor-lever.stl**



**mini-fsensor-box.stl**

mini-fsensor-cover.stl



## Other files



howtoprintparts.pdf

## License ©

This work is licensed under a  
[GNU](#)



[General Public License v2.0](#)

- 
- ✘ | Sharing without **ATTRIBUTION**
  - ✓ | Remix Culture allowed
  - ✓ | Commercial Use
  - ✓ | Meets Open Definition
  - i** | Share under the same license